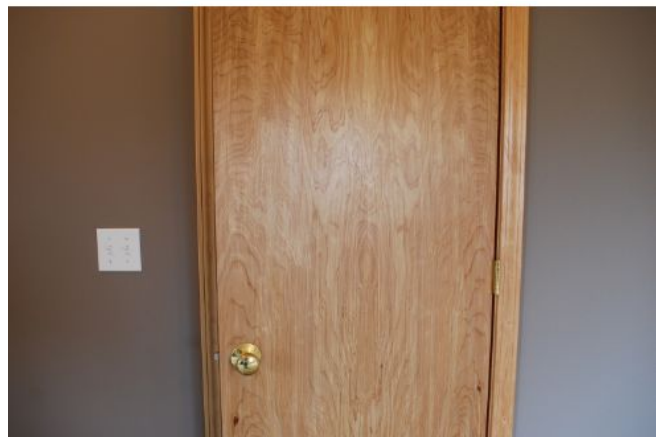
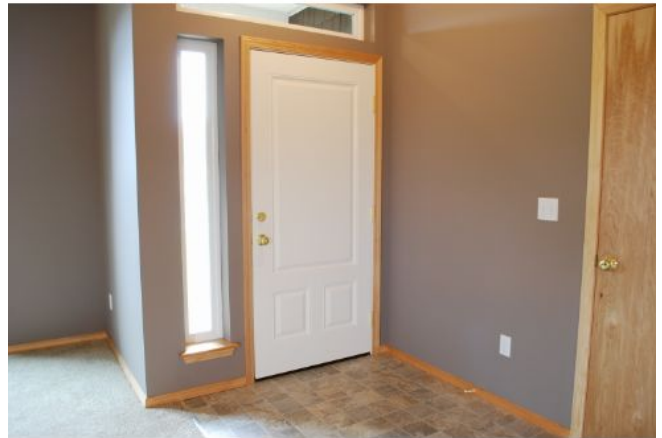


209 Parsley Ave  
Shelton, WA, 98584

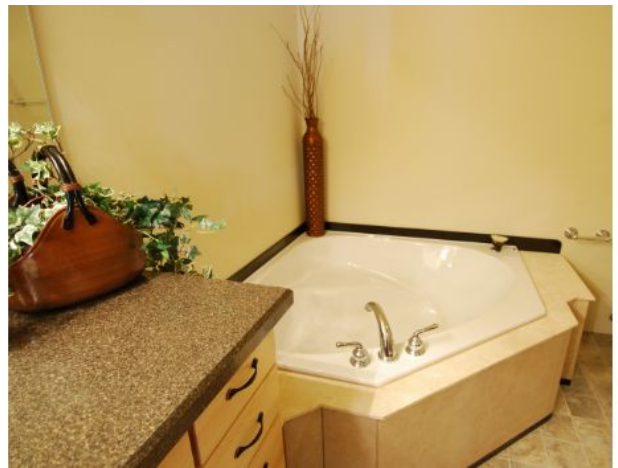
**\$154,900**  
MLS# 287646





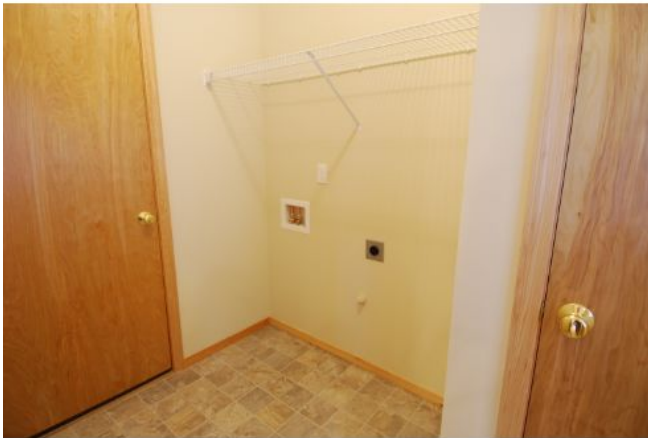
---

Visit <http://www.windermere.com/listing/11090863> for more information  
Lot size, price, measurements etc based on information available from the MLS Buyers to verify  
EQUAL HOUSING OPPORTUNITY



---

Visit <http://www.windermere.com/listing/11090863> for more information  
Lot size, price, measurements etc based on information available from the MLS Buyers to verify  
EQUAL HOUSING OPPORTUNITY



---

Visit <http://www.windermere.com/listing/11090863> for more information  
Lot size, price, measurements etc based on information available from the MLS Buyers to verify  
EQUAL HOUSING OPPORTUNITY



---

Visit <http://www.windermere.com/listing/11090863> for more information  
Lot size, price, measurements etc based on information available from the MLS Buyers to verify  
EQUAL HOUSING OPPORTUNITY

---

**Image Notes**

---



**Keith Fuller**

Windermere Real Estate/Himlie

Office: (360) 426-2646/(800) 281-2740

Direct: (360) 490-3811

[landman@keithfuller.com](mailto:landman@keithfuller.com)

---

Visit <http://www.windermere.com/listing/11090863> for more information

Lot size, price, measurements etc based on information available from the MLS Buyers to verify

EQUAL HOUSING OPPORTUNITY